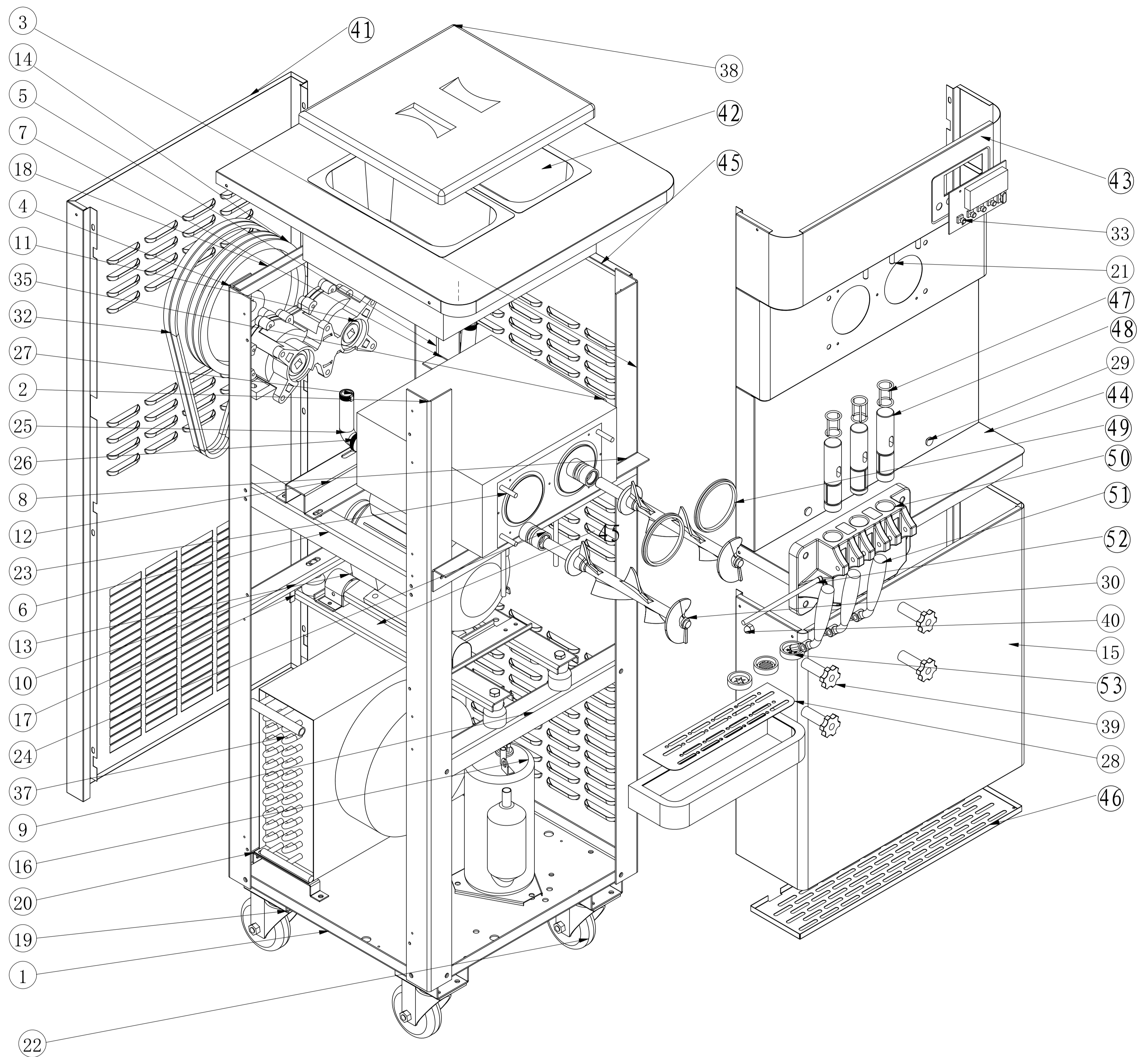


项目号	零件号	数量
1	Floor	1
2	Front, left support	1
3	Front, right support	1
4	Rear, left support	1
5	Rear, right support	1
6	Left transbeam	1
7	Right transbeam	1
8	The support for evaporator	1
9	Fron transbeam	1
10	Rear transbeam	1
11	Reducer	1
12	the transbeam for Speed reducer	1
13	The support for electric motor	1
14	pulley	1
15	Front, down plate	1
16	Compressor	1
17	shock plate for motor	2
18	Up transbeam, rear frame	1
19	The support for wheel	4
20	The plate for mounting Condenser	2
21	Travel Switch	1
22	4" wheel	4
23	Evaporator	1
24	Seal ring	2
25	Bender	2
26	Clamps(Φ 32)	2
27	Clamps(Φ 25)	2
28	Cover for receiving case	1
29	Screw for receiving case	2
30	Beater	2
31	Motor to adjust the spring	1
32	Belt	2
33	Control Module	1
34	After the oil box	1
35	PC BOX	1
36	PC	1
37	Condenser	1
38	Hopper cover	1
39	Screw	4
40	Nut	1
41	Rear plate	1
42	Hopper	1
43	Front cover(with black sticker)	1
44	Plate for receiving case	1
45	Side plate	2
46	Base plate	1
47	Seal for Piston	3
48	Piston	3
49	Seal for Dsitributor	2
50	Dsitributor seat	1
51	Handle	3
52	Pin	1
53	Dsitributor	3



GB/T1804-m	尺寸公差							材料	浙江斯贝乐制冷电器有限公司		
	0.5-6	±0.1									
	6-30	±0.2						开料尺寸	冰淇淋机		
	30-120	±0.3	标记	处数	更改文件号	签名	年/月/日				
	120-400	±0.5	设计	李富林	2015-4-28	标准化		版本号	数量	比例	825B
	400-100	±0.8						1.0	1		
	1000-2000	±1.2	审核					共 1 张 第 1 张			
	角度	±0.5°	工艺				批准				